



DEPTFORD PARK PRIMARY SCHOOL NEWSLETTER

Friday 13th March 2020

It's been a great start to the second half of the spring term and there has been a lot going on. It's been **SCIENCE** week and the children have produced some fantastic work that we hope to share with you in the next newsletter. We hope you have now had time to read and digest the findings of the parental survey sent out at the beginning of the week (If you would like a paper copy please do let the office know). Thank you for such detailed feedback, it will be useful in our school improvement endeavours.

We also hope you found your recent parent meeting useful in understanding your child's progress and targets. Do enjoy reading about all the great things going on highlighted in this March newsletter and please take note of the new term dates for 2020-21 at the back. We wish you an enjoyable and restful weekend.

SAFEGUARDING REMINDER

There have been a number of parental complaints about other parents parking outside the school at the start and close of the school day. Please can we remind you in the interest of our children **NOT** to park on the zig-zag lines. We will be monitoring this closely.

Thank you.



Valentine Gift Sale
Friends of Deptford Park
PTA raised **£110**



Thank you for supporting us in raising funds for our playground project!

Well done FODP!



This week is:
SCIENCE WEEK! Look forward to sharing our work with you in the next newsletter.

Inset Day:
The outstanding inset day has now been confirmed

Thursday 7th May ~ Polling Day



The Friends of Deptford Park PTA would like to thank The Communication Workers Union for their kind donation of £500 towards having our playground re-painted.

THANK YOU!



Medical appointments.

We understand that from time to time children need to attend medical appointments during the school day, if this is the case we request that children come to school then get collected for their appointment and then return to school.

We will not authorise whole day medical Appointment unless it is an all day appointment.

Trip Dates

24th March ~ Sapphire ~ Tate Modern
25th March ~ Amber ~ Tate Modern
26th March ~ Emerald ~ Tate Modern

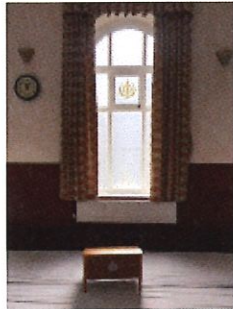
Class Assemblies
Wednesdays in the Infant Hall @9.15 am
This is a great opportunity to see what your children have been learning in class.

18th March ~ Rose Class
1st April ~ Green Class

A copy of this newsletter can also be downloaded from the school website: www.deptfordparkschool.co.uk. Also follow us on twitter @deptfordpark or download our free app

CURRICULUM NEWS THIS TERM:

Year 4 had an interesting and enjoyable time at the Sikh temple...



On Tuesday 3rd March, members of the Street Dance after school club went to perform alongside several other Lewisham primary and secondary schools. The children were incredibly professional and gave a stunning performance! A special thank you goes to Sade and Evonnee, our dance tutors, who run our after school Street Dance Club and prepared our children for the show.

If you would like to join one of our after school clubs provided by Kids Vogue Stars (Street Dance or Performing Arts), please contact Sade. The clubs cater for all ages from Reception to Year 6.



0208 432 2200

Email: info@kidsvquestars.co.uk

Website: www.kidsvquestars.co.uk

Uniform

Can we please remind you of our school uniform.

Polo shirts ~ White

Trousers/ skirts ~ Navy Blue/Black

Tights and socks should be plain either Black/Navy or White

When buying uniform please do not buy grey trousers or skirts.

Thank you

Attendance and Punctuality

We are working hard to improve our attendance and punctuality. Please help us by ensuring that your child attends school regularly and on time. School starts at 8.55am.

If your child is unwell please call the school on the first day of absence. Thank you



Best attendance this term: 1st ~ Ruby 97.8% 2nd ~ Opal 97.17% 3rd ~ Quartz 97.07%

Well done!

Term Dates

Friday 3rd April Last day of Spring Term

Monday 6th April – Friday 17th April ~ HOLIDAY

SUMMER TERM 2020

Monday 20th April
Tuesday 21st April
Thursday 7th May
Friday 8th May
Friday 22nd May

INSET DAY

Children return to school

INSET DAY - POLLING

MAY DAY – SCHOOL CLOSED (1 DAY)

Last day prior to the Half Term Holiday

Monday 25th May – Friday 29th May - HALF TERM HOLIDAY

Monday 1st June Children return to school
Tuesday 21st July Last day of the Summer Term

EYFS URGENT REQUEST



The Early Years are in desperate need of mechanical toys such as skateboards, bikes and scooters that the Reception children can 'fix' (disassemble).

We are also in need of spare clothes for our Reception aged children.



Please hand them in at the office.

Many thanks!

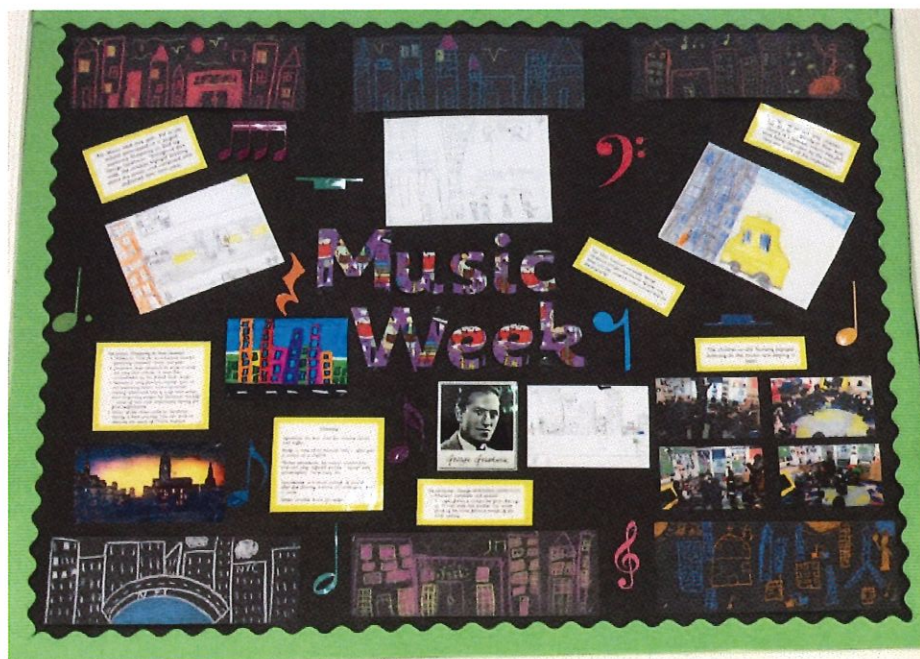


Parent Volunteers

Thank you so much to all of you that volunteer to go on school trips. Without your help school trips would not be able to go ahead. Classes usually require at least 3 parent helpers, so thank you for giving up your time to support us.



MUSIC WEEK



Music Week was a huge success! The children throughout the school enjoyed exploring Jazz music, especially "Rhapsody in Blue" by George Gershwin. Children drew their own "City Scapes" as they listened to the music. Then they composed and performed their own Jazz piece. Here is Jiang's City Scape drawing below.



Deptford Park Primary School

Term Dates 2020/21



AUTUMN TERM 2020

Wednesday 2nd September
Thursday 3rd September
Friday 4th September
Monday 7th September
Friday 23rd October

INSET DAY
INSET DAY
INSET DAY

Children return to school
Last day prior to Half Term Holiday

Monday 26th October – Friday 30th October - HALF TERM HOLIDAY

Monday 2nd November
Friday 18th December

Children return to school
Last day of Autumn Term 2020

Monday 21st December – Friday 1st January - HOLIDAY

SPRING TERM 2021

Monday 4th January 2021
Tuesday 5th January
Friday 12th February

INSET DAY

Children return to school
Last day prior to Half Term Holiday

Monday 15th February – Friday 19th February - HALF TERM HOLIDAY

Monday 22nd February
Wednesday 31st March

Children return to school
Last day of Spring Term

Thursday 1st April – Friday 16th April- HOLIDAY

SUMMER TERM 2021

Monday 19th April
Tuesday 20th April
Monday 3rd May
Friday 28th May

INSET DAY

Children return to school

MAY DAY – SCHOOL CLOSED (1 DAY)

Last day prior to the Half Term Holiday

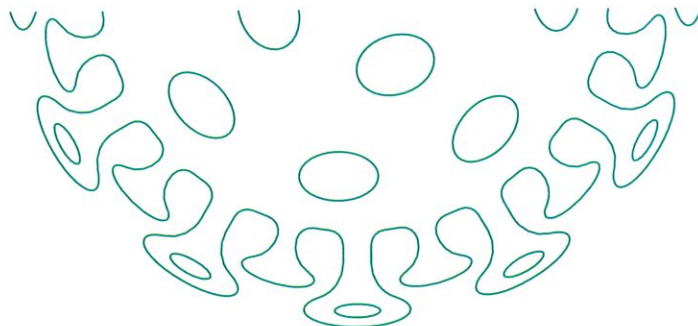
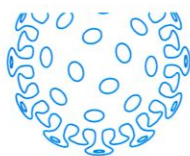
Monday 31st May – Friday 4th June - HALF TERM HOLIDAY

Monday 7th June
Friday 23rd July

Children return to school
Last day of the Summer Term



Public Health
England



Advice on the coronavirus for places of education

How serious is the coronavirus?

- it can cause flu-like symptoms, including fever, cough & difficulty breathing
- the infection is not serious for most people, including children
- there is currently no vaccine
- most people get better with enough rest, water to drink and medicine for pain

How likely are you to catch the virus?

- you can only catch it if you have been close to a person who has the virus
- the chance of being in contact with the virus is currently low in the UK
- if you have travelled to areas where many people are infected, your chance of catching the virus is higher, i.e. China and any affected areas

How can you stop coronaviruses spreading?

If you need to cough or sneeze



Catch it
with a tissue



Bin it



Kill it
by washing
your hands with
soap & water or
hand sanitiser

You should wash hands with soap & water or hand sanitiser



**After breaks
& sport
activities**



**Before
cooking
& eating**



**SCHOOL
ETC.**
On arrival at
any childcare
or educational
setting



**After using
the toilet**



**Before
leaving
home**



Try not to touch your
eyes, nose, and mouth
with unwashed hands



Do not share items that come
into contact with your mouth
such as cups & bottles



If unwell do not share items
such as bedding, dishes,
pencils & towels



Stop germs spreading with our e-Bug resources on hand and respiratory hygiene lesson plans for KS1, 2 and 3: campaignresources.phe.gov.uk/schools

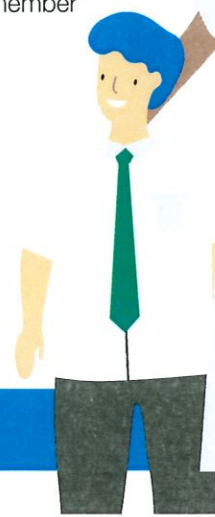


What should you do if you feel unwell?

Keep away from others and stay at home to stop the infection spreading. Avoid public transport if you think you have symptoms of coronavirus. If you become unwell at a place of education, tell a member of staff and let them know if you have travelled to any other countries in the last 14 days.

If your staff member or parent thinks you have symptoms of coronavirus, they should call **NHS 111** for advice. Follow the UK Government advice for childcare or educational settings gov.uk/government/publications/guidance-to-educational-settings-about-covid-19. Parents can visit NHS.UK to find out more information. Teachers and support staff should follow the UK Government advice.

Staff, students and pupils who have returned from Iran, specific lockdown areas in northern Italy, special care zones in South Korea or Hubei province China (returned in the past 14 days) should self isolate, and NOT attend education or work for 14 days. See NHS.UK for advice on coronavirus.



If there is an emergency, call 999 immediately