

DEPTFORD PARK PRIMARY SCHOOL NEWSLETTER



Tuesday 17th January 2017



Happy New Year! We hope you had an enjoyable break. The children have got off to a flying start! We are thrilled to let you know that we raised £113.20 for "Save the Children" from our Christmas Jumper/ Wear your own clothes day. Many thanks for your support! We have a very busy Spring term ahead of us. We trust you have found your child's year group "Topic Map" useful; it explains what skills the children will be learning this term. To all our families who will celebrate shortly: **KUNG HEI FAT CHOI!** Happy Chinese New Year!



REMINDER: In the event of adverse weather please check the school website:

www.deptfordpark.lewisham.sch.uk. It will be updated by 7.30am each morning. We will also post a message on Twitter. You can follow us @deptfordpark. You can also phone the school on the usual number and the answer phone message will provide an update from 7.30am. If there are no messages then assume we will be open as normal. Please note when the school is open, the 'weather' given as a reason for absence will not be authorised. We may also be forced to dismiss the children from the school halls if the playground freezes so we can get children and families out safely.



Thanking you in advance for your patience and co-operation.

DPPS ART EXHIBITION

Please visit the "Art in the Park" exhibition during the February half term. Deptford Park along with some other schools have been working hard on getting work ready for this great event.

The gallery is in Southwark Park, near the children's playground. Entry is free

DATES FOR YOUR DIARY

23rd January:

Parents maths workshop for Years 3&4.

25th January:

Ruby Class to The British Museum

Emerald & Amber classes to The Natural History Museum.

26th January:

Diamond Class to The British Museum.

Sapphire Class to The Natural History Museum

27th January:

Topaz Class to The British Museum

2nd February:

Purple & Red to London Zoo

3rd February:

Yellow & Blue to London Zoo

Half Term:

13th February - 17th February

Return to school Monday 20th February

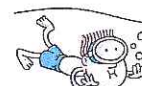
27th February:

Parents' evening

Swimming will start again for Year 3 and 4

Sapphire: Tuesdays starting 17th January

Amber: Thursdays starting 19th January



Please ensure your child brings their swimming things with them in the morning each week.

Class Assemblies

Wednesdays in the Infant Hall @9.15 am

This is a great opportunity to see what your children have been learning in class.

18th January ~ Amber Class

25th January ~ Diamond Class

1st February ~ Topaz Class

8th February ~ Ruby Class

A copy of this newsletter can also be downloaded from the school website: www.deptfordparkschool.co.uk. Also follow us on twitter @deptfordpark or download our free app

CURRICULUM NEWS THIS TERM:

READING - DPPS TOP TIPS:

1. Read **REGULARLY** with your child– little but often is best.
2. Check that the book your child is reading is at their **READING LEVEL**.
3. **READ TO** your child; yes even when they're older!
4. **TALK** with your child as much as you can, especially about the books they are reading.
5. **COMMUNICATE** with the **SCHOOL**. Write in your child's reading record book regularly to let us know how your child's getting on with reading and any concerns.
6. Join and visit a **LIBRARY**; It's free and contains a variety of books for the children to read, enjoy and pursue their interests.
7. Make reading **ENJOYABLE**. Be positive.
8. Take advantage of **ONLINE** reading resources and apps, especially "**BUG CLUB**."



READING
is the  to
SUCCESS



Dinner money for this half term

4th January–10th February will be £56.00

Dinner money must be paid a week in advance at £10.00 a week.

If you feel you could be entitled to free school meals please contact Lewisham Pupil Support on: 020 8314 6221, all they need is your NI number and will be able to tell you immediately if you qualify. The school also receives an additional funding that we can use for resources for our children, therefore it is really important that you register.

Attendance and Punctuality



We are working hard to improve our attendance and punctuality. Please help us by ensuring that your child attends school regularly and on time. School starts at 8.55 a.m. If your child is unwell please call the school on the first day of absence. Thank you.

Best attendance so far this term:
KS1: Blue, Silver and Red
KS2: Sapphire, Diamond and Garnet
Well done!

CALLING ALL CHILDREN...
Got something to say or a piece of work you are proud of? Why not publicise it in the school's newsletter?